

Attic Inscriptions: Education

2. KS 1/2 Animals activity

In this class we will look at animals shown in ancient Athenian inscriptions

How do the ancient Greeks depict animals?

How realistic are they?

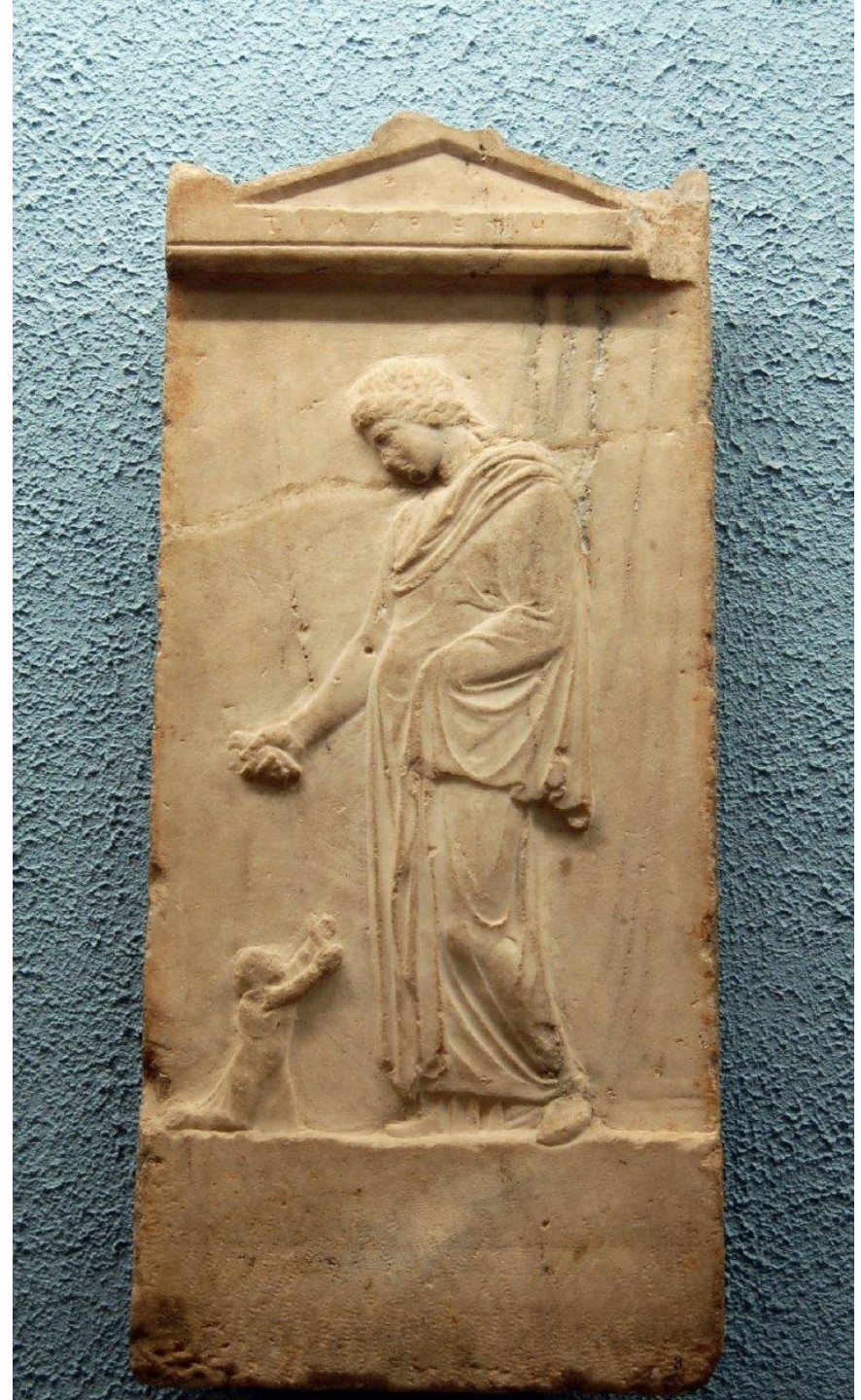
What did they use animals for?

What stories did the Greeks tell about animals?

What adjectives can we use to describe the animals?

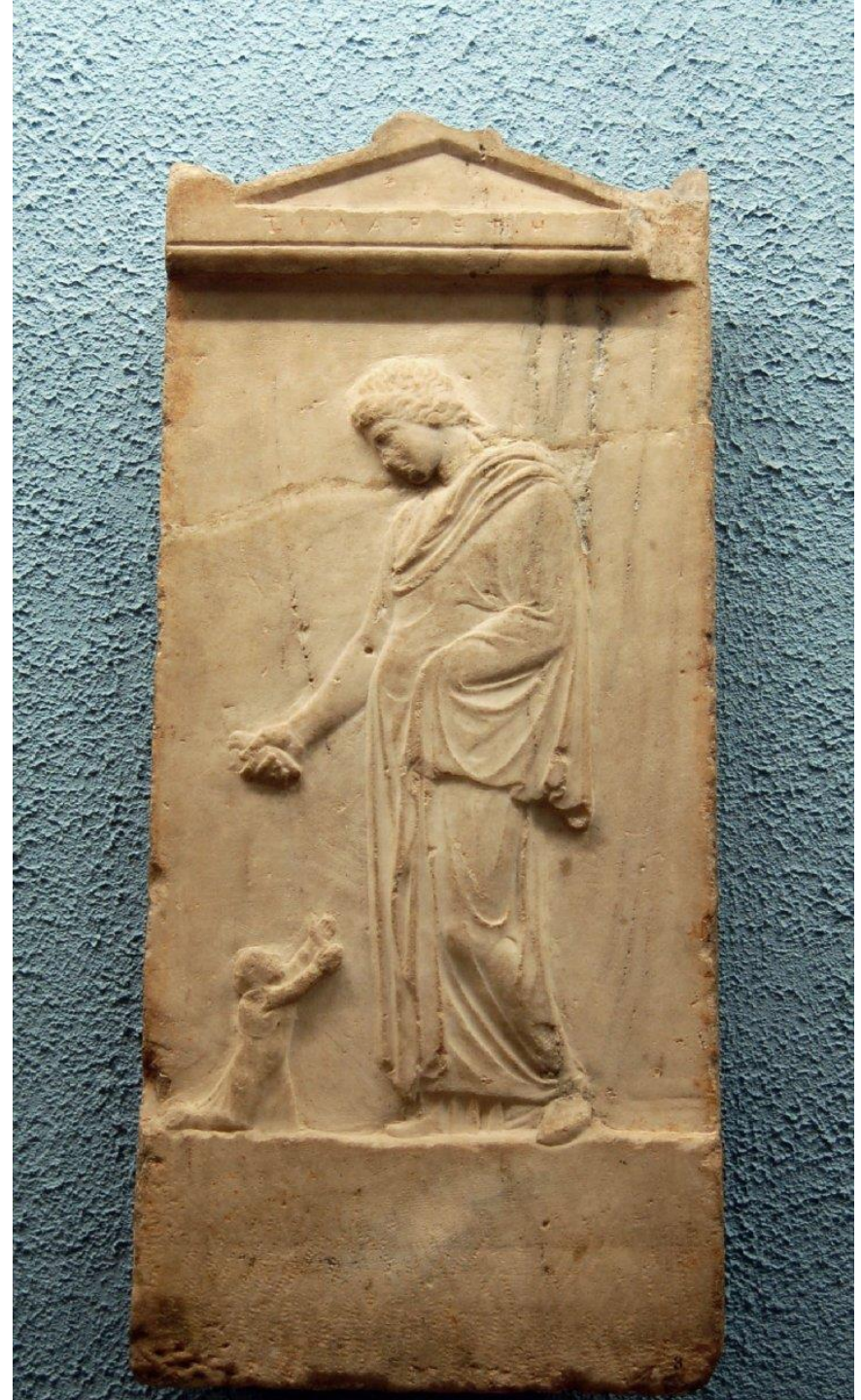
Marker for
Timarete from
Athens (400
BC). Now at
the British
Museum in
London.

What does the
woman hold in
her hand?





What does the woman hold in her hand?



Marker for Menakles
and Menaltes from
Athens.

Now at the British
Museum in London.

What do the birds seem
to be doing? What type
of birds are they?



Scene from a dedication at Brocklesby, Lincolnshire.



ANTIQUE BASSO RELIEVO of CECROPS & his three DAUGHTERS

A human animal! But what is he leaning on?



Stone vase. From Athens, now at the British Museum in London

The man leads a horse by the bridle and is accompanied by a small slave-boy and two dogs.



A horse-rider from Brocklesby in
Lincolnshire



Aristokles from Athens (now at the British Museum in London).

What is he doing?
What is the horse doing?
What might this say about him and his background?



Philodemos,
Lysimache and
their horse.

Can you think of a
word to describe
the horse? (an
adjective?)

Now at the
Ashmolean,
Oxford.



Pantakles.

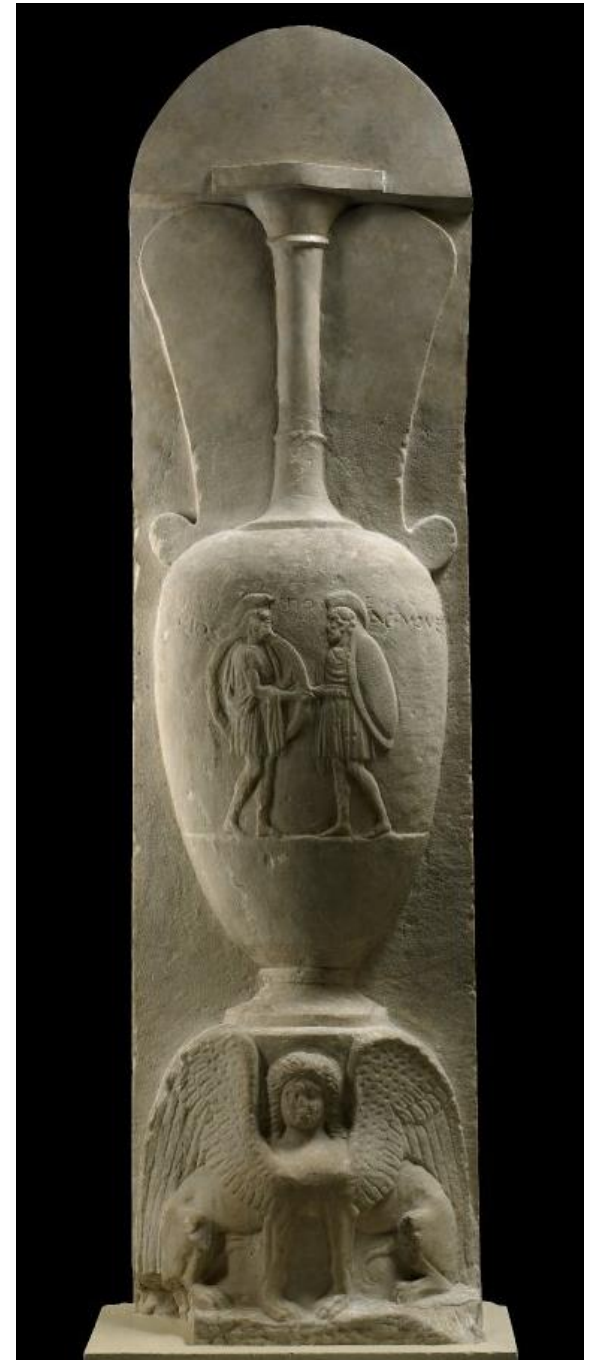
Great North
Museum,
Newcastle.

What type of
animal is this (at
the top)? Is it a real
one?



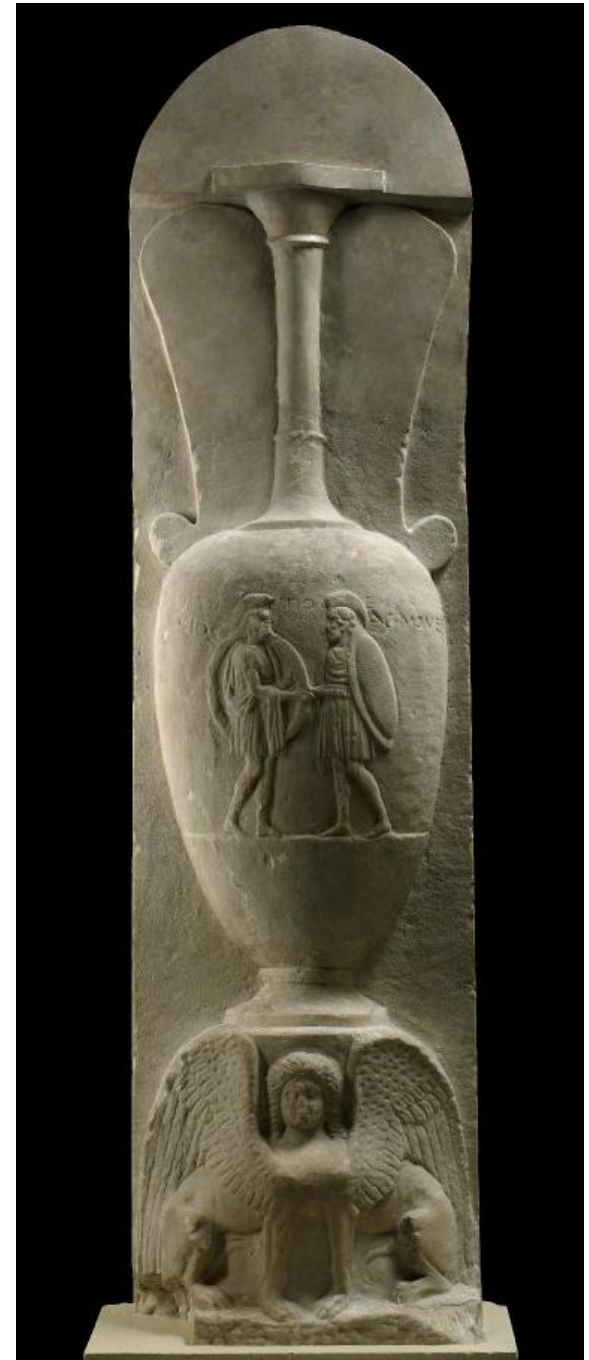
Archeades and Polemonikos from Athens (now at the British Museum).

Can you spot an animal? How would you describe it?





Can you spot an animal?
How would you describe it?



Are there any animals depicted on this [stone chest](#) from ancient Athens?





ΑΙΛΙΟΣ ΕΠΙΚΡΑΤΗΣ ΒΕΡΕΝΙΚΙΑΣ ΑΙΛΙΟΥ ΖΗΝΩΝΟΣ ΤΟΥ ΕΣΠΕΡΟΥ

Real and mythical animals on a stone chest from ancient Athens





Images Copyright

© Trustees of the British Museum; © The Fitzwilliam Museum, Cambridge; © The Ashmolean Museum, Oxford; © National Trust; © *Forschungsarchiv fuer Antike Plastik*, Koeln; © Tyne and Wear Museums.